

Flat 1 9 Brigadier Close, Withington, Manchester, M20 3BX

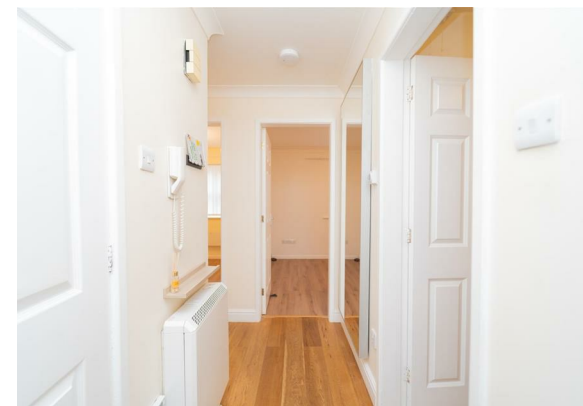


JP&Brimelow
ESTATE AGENTS

Offers In The Region Of £200,000

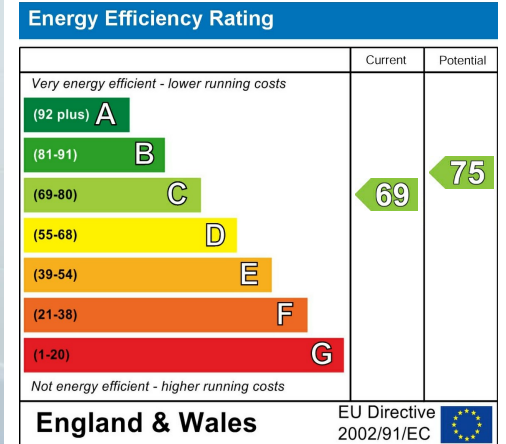
 2  1  1  C

VIDEO TOUR AVAILABLE A delightful and well kept, TWO BEDROOM, ground floor apartment. Situated within this purpose-built development off Burton Road in Withington. A short stroll from the independent boutique shops, popular bars, restaurants and cafes of Burton Road in West Didsbury, The Metrolink station on Lapwing Lane or in West Didsbury giving you direct access into the City centre, Media City and Didsbury village. The well-planned apartment consists of; a communal entrance hallway with stairs to all floors, a private entrance hall with useful storage, two bedrooms, a three-piece bathroom suite (with shower over bath), a fitted kitchen and a large lounge/diner completing this fabulous apartment. The apartment benefits from, an intercom system, electric heating and allocated parking and visitor parking. Positioned nearby to Withington Baths and leisure centre, Wilmslow Road with a selection of independent shops/cafes/bars and Sainsbury's local supermarket. OFFERED WITH NO VENDOR CHAIN.



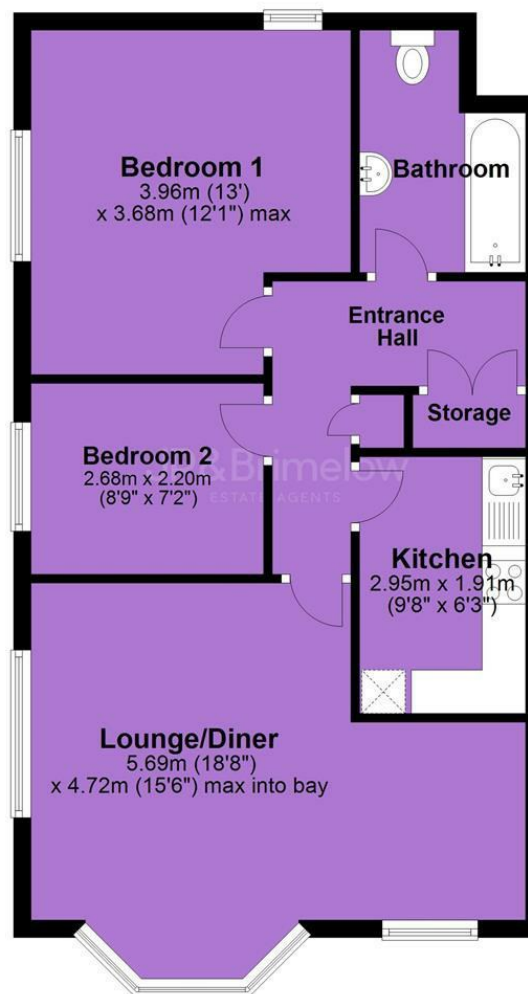


EPC Chart



Tenure: **Leasehold** Council Tax Band: **C**

Ground Floor



JP & Brimelow Estate Agents Ltd
430 Barlow Moor Road, Manchester, M21 8AD
Tel: 0161 8822233
E: sales@jpbrimelow.co.uk www.jpandbrimelow.co.uk



JP & Brimelow
ESTATE AGENTS

NOTICE: JP & Brimelow Estate Agents Ltd for themselves and for the vendors or lessors of this property whose agents they are give notice that:

- (i) the particulars are set out as a general outline only for the guidance of intending purchasers or lessees, and do not constitute, nor constitute part of, an offer or contract;
- (ii) all descriptions, dimensions, references to the condition and necessary permissions for use and occupation, and other details are given in good faith and are believed to be correct but any intending purchasers or tenants should not rely on them as statements or representations of fact but must satisfy themselves by inspection or otherwise as to the correctness of each of them;
- (iii) no person in the employment of JP & Brimelow Estate Agents Ltd has any authority to make or give any representation or warranty whatever in relation to this property.

jpandbrimelowestateagents

@jpandbrimelow